



## BRIDE COURT, BLACKFRIARS, EC4Y

### 2 BED APARTMENT

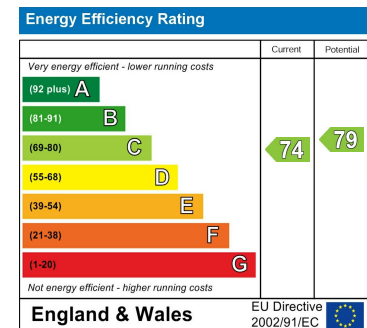
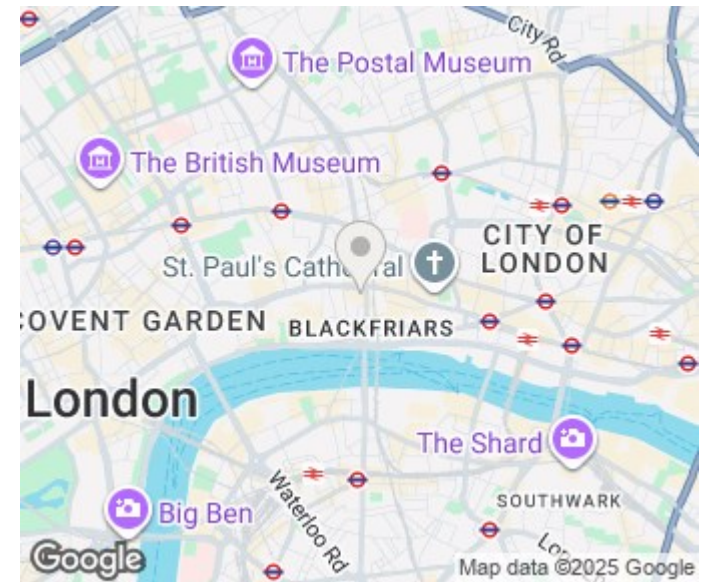
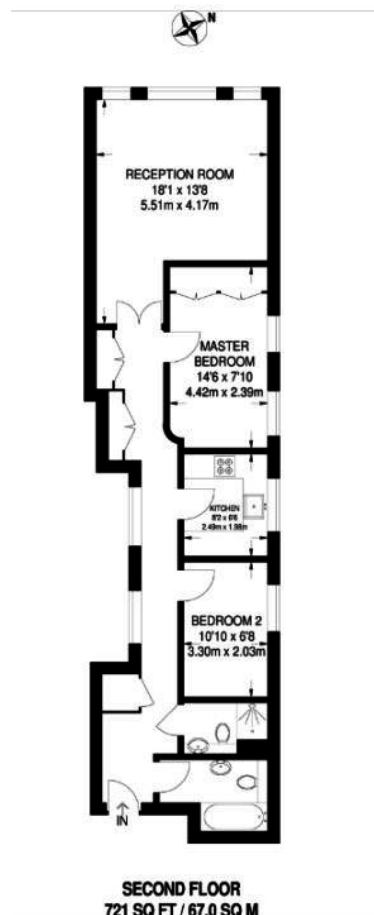
**£700,000**  
LEASEHOLD

A well-appointed two double bedroom, two bathroom apartment extending to approximately 720 sq ft, set within a desirable and centrally located development. The property is offered fully furnished, making it an ideal turnkey option for owner-occupiers, professional sharers or investors.

The accommodation comprises a bright and comfortable living arrangement with two generous double bedrooms, two modern bathrooms, and a separate fully fitted kitchen, offering practical and well-defined living space. The layout is particularly well suited to sharers, providing privacy and balance throughout.

The location is a key highlight, offering excellent connectivity across London. Transport links are superb, with Blackfriars Station (Circle & District Lines), City Thameslink Station, and Farringdon Station all within easy reach. The Central Line at St Paul's Station is also close by, while Blackfriars Pier offers riverboat services east to Canary Wharf and west towards Westminster and beyond.

**Hemmingfords**



Agents Note: Whilst every care has been taken to prepare these particulars, they are for guidance purposes only. All measurements are approximate and are for general guidance purposes only and whilst every care has been taken to ensure their accuracy, they should not be relied upon and potential buyers/tenants are advised to recheck the measurements

Hemmingfords Sales  
34 Upper Street  
London  
N1 0PN

02038907470  
info@hemmingfords.co.uk  
www.hemmingfords.co.uk

**Hemmingfords**